

Percussion

Classic Games Medley

arr. J. Morley-Smith

"Super Mario Theme"

A ♩ = 200

Rubato 2

9

9

Musical notation for the 9th measure of the piece. The notation includes a treble clef, a key signature of one sharp (F#), and a 4/4 time signature. The melody consists of eighth and sixteenth notes, with rests and a final quarter note. Above the staff, there are several 'x' marks indicating specific rhythmic points or accents.

14

14

Musical notation for measure 14, showing a treble clef, a key signature of one sharp (F#), and a 4/4 time signature. The melody consists of eighth and quarter notes, with a final quarter rest. The bass line consists of quarter notes and rests. There are six 'x' marks above the staff, corresponding to the notes in the first two measures.

18 **B**

18 **B**

The musical notation for Example 18B consists of a single staff with a treble clef and a key signature of one flat (B-flat). The time signature is 4/4. The notation shows a four-measure sequence of a rhythmic pattern. Each measure contains a half note on the first line (F4), followed by a quarter rest, then a quarter note on the second line (D4), and finally a quarter note on the third line (B4). The pattern is repeated in each of the four measures.

22

22

26 **C**[illegible]

31

31

"The Legend Of Zelda - Ocarina of Time"

38 **D** ♩ = 82

accel. _ _ _ _ _

15

The musical score for 'The Rose Tree' is presented on a single staff. The key signature is one sharp (F#), and the time signature is 4/4. The melody begins with a half note G4, followed by a half note A4, and then a half note B4. The piece concludes with a final whole note G4. The title 'The Rose Tree' is written in a decorative, stylized font above the staff.

54 $\text{♩} = 152$ **E** "Sonic The Hedgehog"

58

62

66

70

74

77

"Angry Birds"

80 **F** $\text{♩} = 120$
2

85

89 **G**

Detailed description: This is a percussion score for two staves. The first section, 'Sonic The Hedgehog', starts at measure 54 with a tempo of 152 bpm. It features a complex rhythmic pattern with many sixteenth and thirty-second notes, often beamed together. Above the staff, there are 'x' marks indicating specific points of emphasis or hits. The second section, 'Angry Birds', starts at measure 80 with a tempo of 120 bpm and a '2' indicating a double bar line. It features a simpler, more regular rhythmic pattern with quarter and eighth notes. Above the staff, there are 'x' marks and 'y' marks indicating specific points of emphasis or hits. The score ends at measure 89 with a 'G' marking.

93

97

100 $\text{♩} = 100$

"Mario Bros Underworld Theme"

104 **H**

110

"Super Mario Galaxy Theme"

113 **I** $\text{♩} = 120$

123 **J**

f *mf* *mp*

127

131

135 **K**

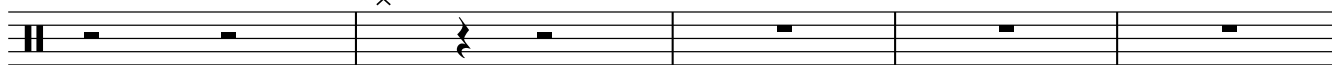
7

142



rall.

♩ = 96



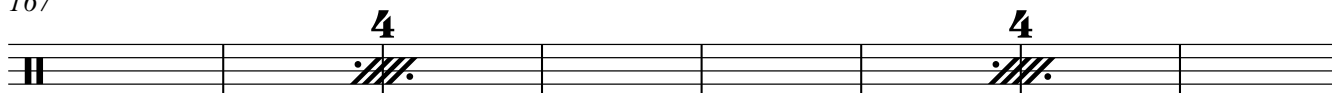
"Gusty Garden Galaxy"

147 **L****16****M** ♩ = 136

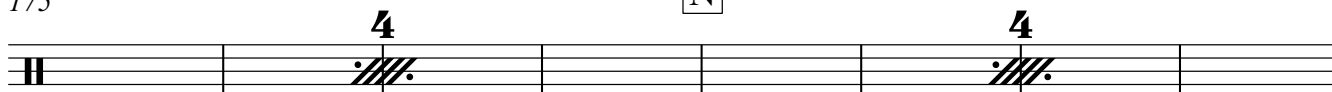
165



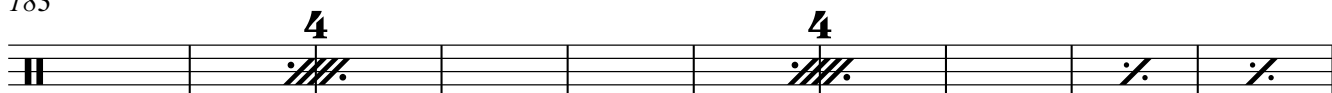
167



175



183



"Super Mario Galaxy Theme - Reprise"

193 **O** ♩ = 136

197



201



205



